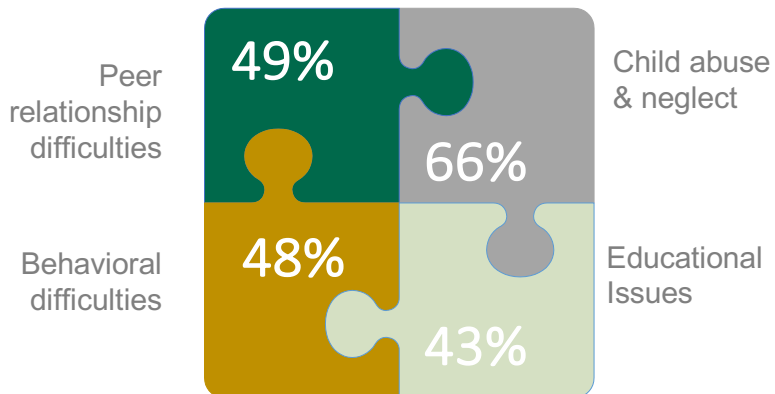


Pennsylvania Organization Report 2017

JusticeWorks YouthCare provides innovative and cost-effective services for children, youth and families at any point in the continuum of involvement with the child welfare or juvenile justice systems, or for youth who require alternative education services. We find a way to engage youth and families to achieve better results regarding factors impacting safety, permanence, well-being, and delinquency. Our model supports flexible service provision, are provided in the community, and employs techniques and interventions grounded in theory.

Issues at Referral



Referral Sources

JusticeWorks YouthCare currently provides services to Children and Youth Services and Juvenile Probation Offices in over 40 counties in Pa.



VIOLET INITIATIVE PROGRAM® (Juvenile Probation)

- VIP® reduces the likelihood of long-term out-of-home placement
- Focuses on accountability, community protection, & competency development
- Is an intervention for youth 10-21 years of age
- Varies in intensity from 2 to 6 hours/week

Short-term Therapeutic Outreach to Prevent Placement® (CYS)

- STOPP® keeps families intact, well-functioning, and their children safe
- Focuses on prevention of out-of-home care, reduction in residential placements, & community reintegration
- Provides for small caseloads allowing for thorough assessment & quick response to family needs

JUSTCARE® PROGRAM (JPO & CYS)

- JustCare® keeps children safe and families intact
- Focuses on rectifying relational & behavioral problems
- Is a reunification program to reduce length of stay in residential services
- Serves as a step-down to STOPP® & VIP®
- Provides individualized case management services

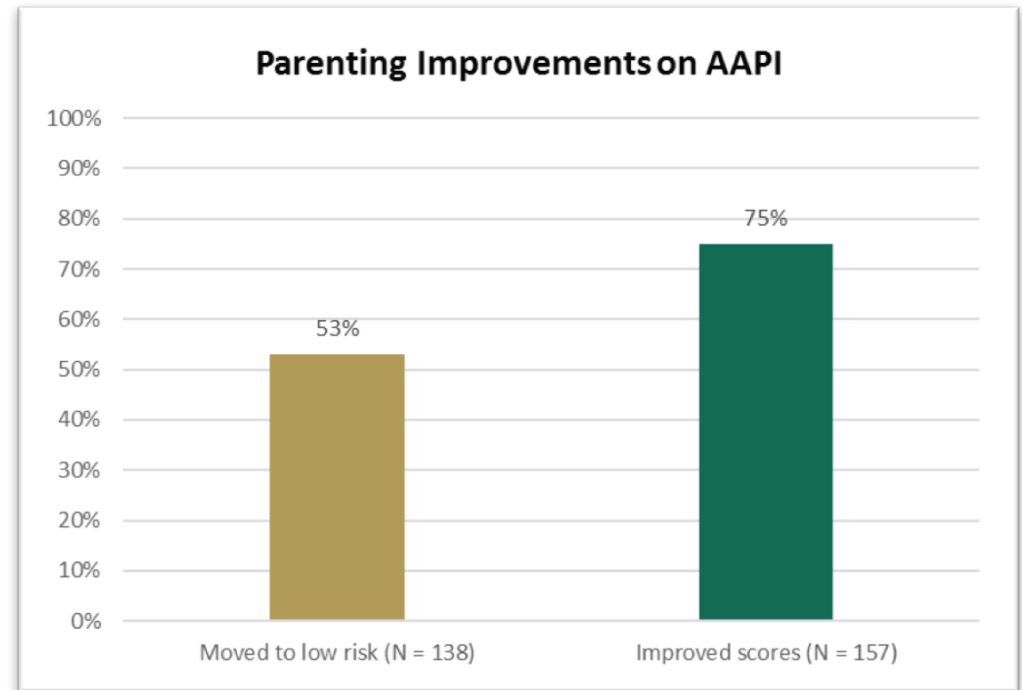
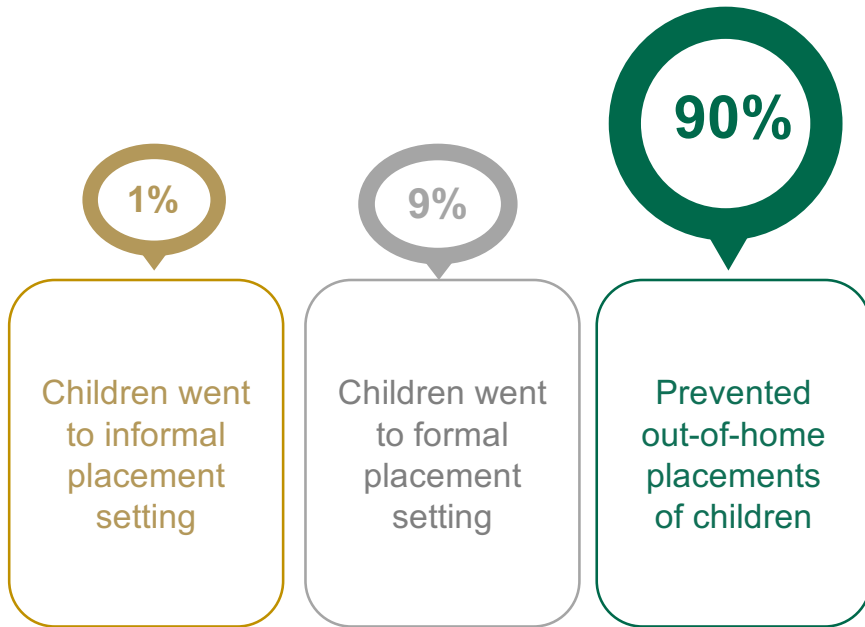
Signature Programs at JusticeWorks YouthCare



Demographics for FY2017

- 5,344 Children and parents served
- 2,149 Number discharged
- 177 Average length of service days

SOCIAL IMPACT ACHIEVED



Satisfaction Ratings

✓
98% of youth & families were mostly or extremely satisfied with services

✓
98% of youth & families reported receiving good or excellent care.

✓
87% of youth & families reported communication was excellent.

